

IX TRADE SINGLE WINDOW MEETING -  
URUGUAY

AN ANALYSIS OF THE PORT  
COMMUNITY SYSTEM  
IMPLEMENTATION IN JAMAICA

September 2017

PRESENTER:  
Dwain Powell

Port Authority of  
Jamaica



Kingston is the home of Kingston Freeport Terminal Ltd. and Kingston Wharves Limited



# THE PORT OF KINGSTON

# MARKET OUTLOOK



# JAMAICA TRADE FACILITATION AND LOGISTICS: MAJOR INITIATIVES

- Modernization of Customs – Asycuda World & Legislative Enhancements
- Implementation of a Port Community System
- Development of a Logistics Hub
- National Single Window Project – Cabinet Approved
- Privatization of KCT to KFTL – Implementation of a new TOS

# PCS OFFICIAL DEFINITION

*The Port Community System is a neutral and open electronic platform enabling intelligent and secure exchange of information between public and private stakeholders in order to improve the competitive position of the sea and air port's communities.*

*It optimizes, manages, and automates port and logistics processes through a single submission of data and connecting transport and logistics chains.*

# KEY FEATURES



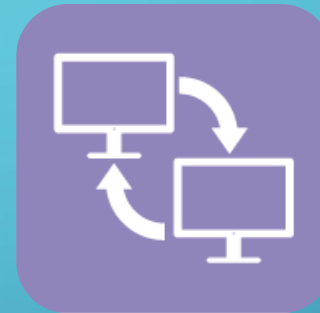
Paperless



Streamlined procedure



Event driven



Interoperability



Data Security

# PCS KEY PILLARS

“ *The Port Community System is a **Single Window** that manages all the **trade logistics business process** to provide:* ”

PCS



Optimization



Collaboration



Automation

JAMAICA P  CS

# COLLABORATION

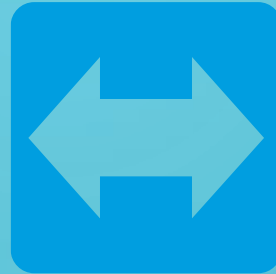




# AUTOMATION



Reporting



Movement



Authorization



Truck  
Appointment



Tracking  
& Tracing



Business  
Intelligence

# CHANGE MANAGEMENT

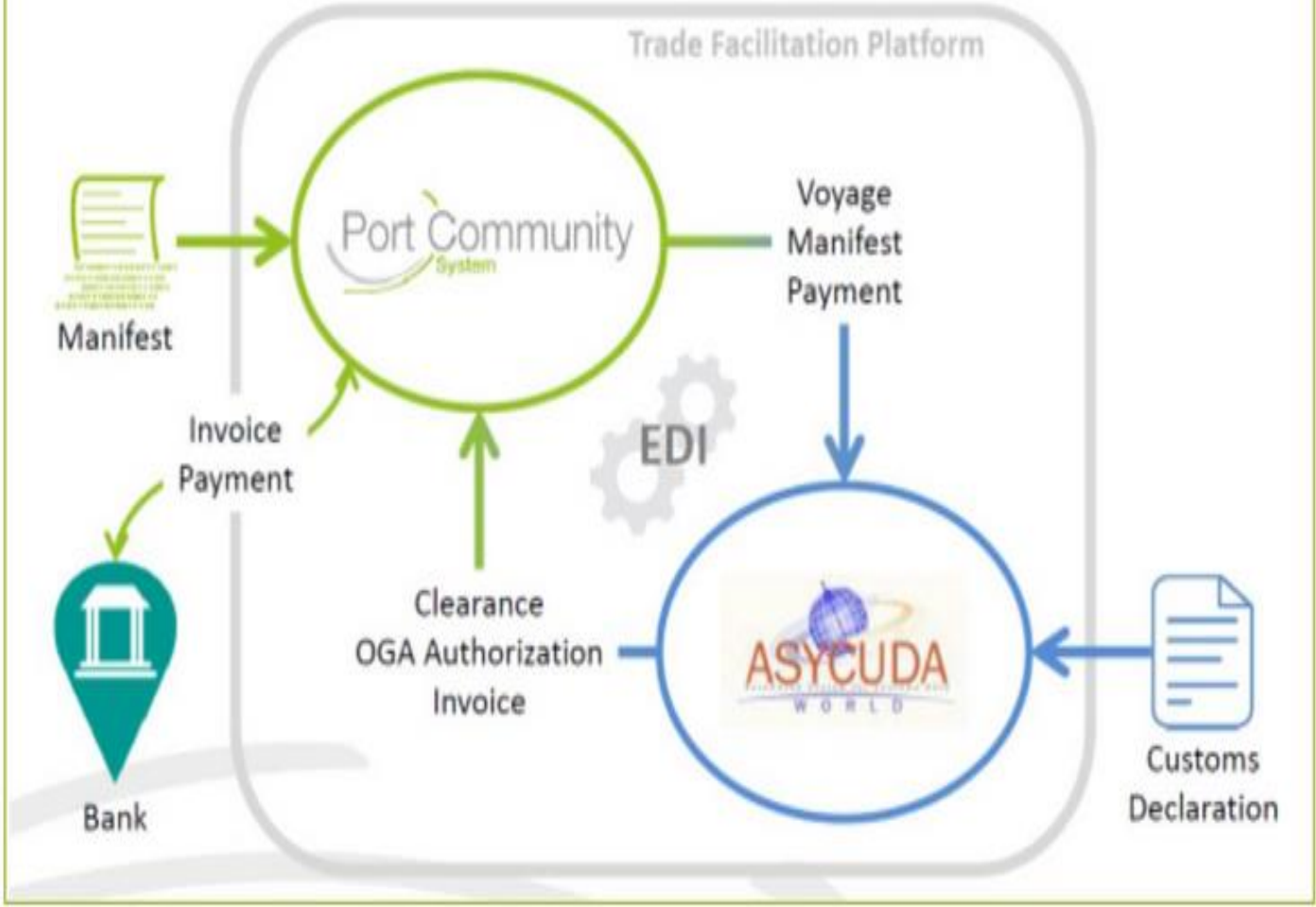


IPCSA Recommendation

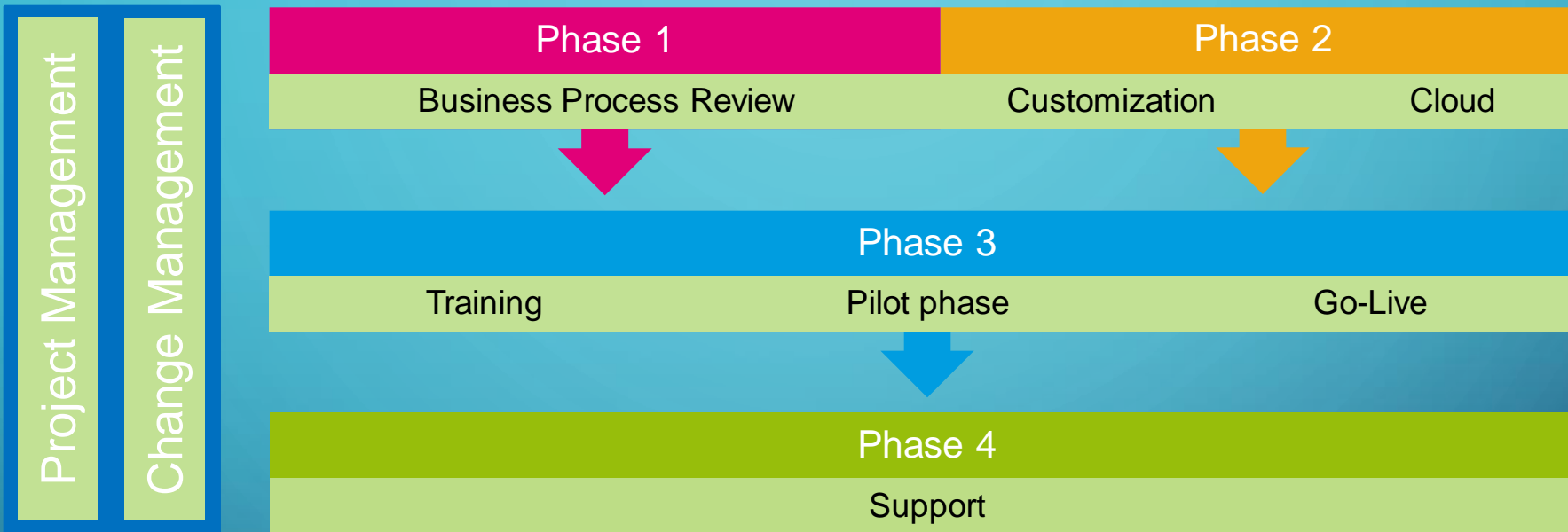
**TURN  
PAPER  
INTO  
DATA**



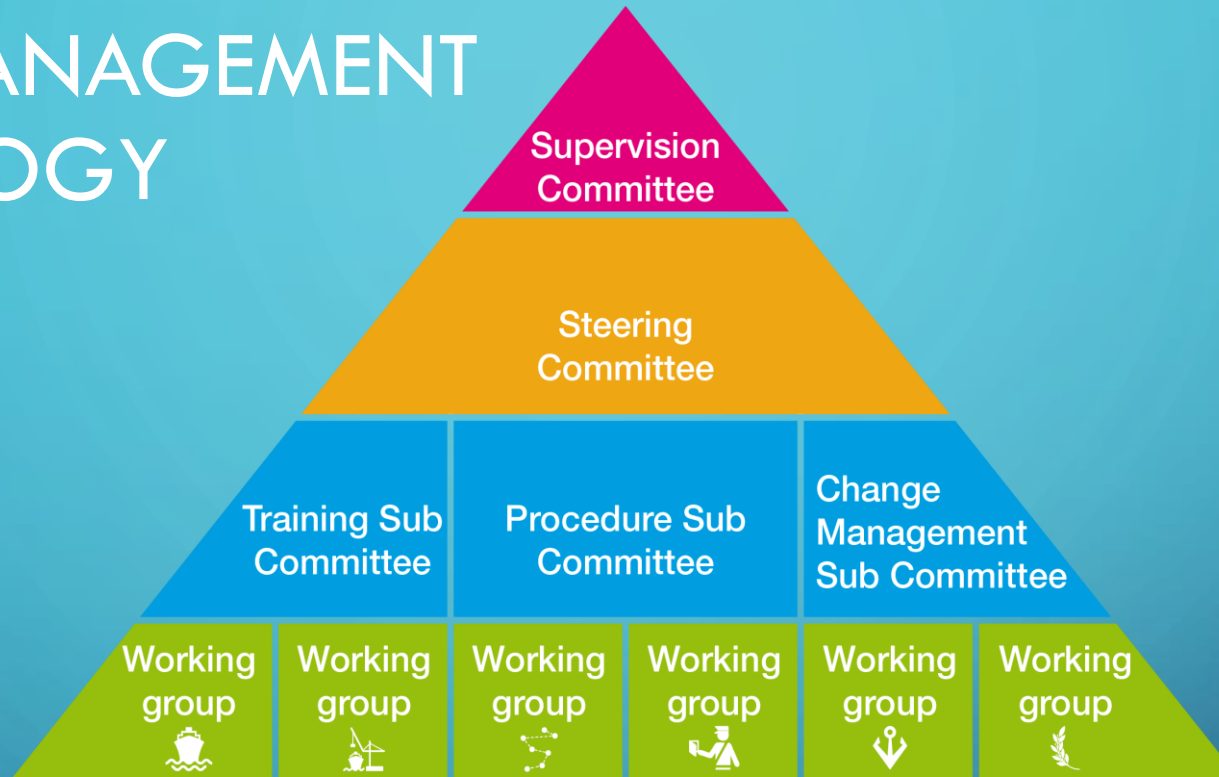
# Customs integration – Best Practices



# ROLL OUT METHODOLOGY



# CHANGE MANAGEMENT METHODOLOGY



# RECENT MAJOR MILESTONES

- ✓ **December 2015: Legislative update to the Port Authority Act : Port Management & Security (Amendment) Regulations 2015.**
- ✓ **January 2016: Creation of the PCS Operator Business Unit**
- ✓ **January 2016: PCS Project Launch**
- ✓ **September 2016: Launch of Transhipment for Kingston**
- ✓ **July 2017: All Shipping Agents are now submitting Manifests through the PCS to Customs**
- ✓ **All Transhipment processing is now being done through the PCS**

# Transshipment

## Former Situation

TSB : 5 hard copies

Payment only possible to the  
Customs Cashier

No end to end tracing of cargo

Manifests sent to different  
stakeholders via hard copy

No KPI's Available

## With PCS



Digitize TSB



ePayment



Real time tracing



Electronic submission



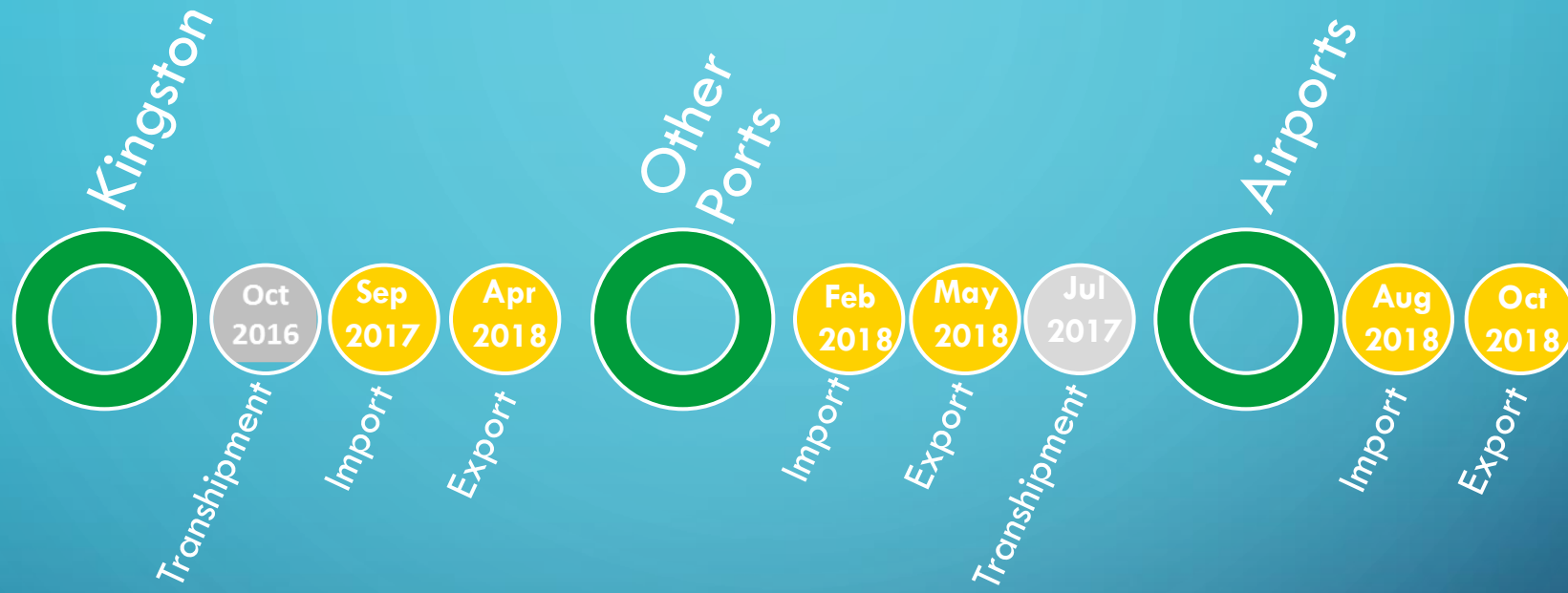
Business Intelligence



# RISKS

- Customs - Process Changes/Integration.
- Integration with Customs & Terminals must be completed on a timely basis.
- Port Community and Trading Community must embrace process changes.

# GLOBAL SCHEDULE



# BENEFIT TO JAMAICA'S INDUSTRY

**The core benefits for all parties involved are higher efficiency and speed regarding re-engineered port processes, particularly through automation and the reduction of paperwork.**



JAMAICA  PCS

# THE BEGINNING...

[WWW.JAMAICAPCS.COM](http://WWW.JAMAICAPCS.COM)

JAMAICA  PCS